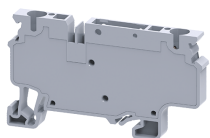


CXCC4



connectwell
THE RIGHT CONNECTION

4 sq.mm Component carrier spring clamp terminal block

These blocks are used for measuring, control, regulatory circuits and for current transformer connection application. These blocks are component carrier base. Various pluggable component carriers can be installed easily. These component carriers have built in protection against incorrect polarity.

CPD1 & CPF component plugs are suitable for these terminal block.

TECHNICAL DATA

Rated Voltage	1000 V
Rated Current	* A
Housing Material	Polymide
Product Function	Feed Through
Wire Entry Orientation	Top
Mounting Possibility	DIN 35/DIN 35-15 Rail
Rated Surge Voltage	8 V
Pollution Degree	3

CONNECTION DATA

Conductor Cross Section Stranded min.	0.2 mm ²
Conductor Cross Section Stranded max.	4 mm ²
Conductor Cross Section AWG/Kcmil min	24 AWG
Conductor Cross Section AWG/Kcmil max	10 AWG
Stripping Length	10 mm

DIMENSIONS

Height with DIN 35 x 15 mm rail	69 mm
Height with DIN 35 x 7.5 mm rail	61.5 mm
Length	65.4 mm
Width (Thickness)	6 mm

ORDERING INFORMATION

CAT. NO.	DESCRIPTION	STD. PACK
CXCC4	4 sq. mm Component Carrier compact spring clamp Terminal Block in Grey colour	50

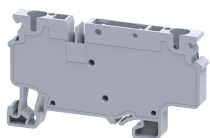
ACCESSORIES

IMAGES	CAT. NO.	DESCRIPTION	STD. PACK
	CA701-1M	Din 35 Rail unslopped 1 meter	50
	CA701-2M	Din 35 Rail unslopped 2 meter	50
	CA701-2M-S	Din 35 Rail slopped 2 meter	50
	CA701-1M-S	Din 35 Rail slopped 1 meter	50
	CA701-15-1M	Din 35 Rail 15 deep unslopped 1 meter	50
	CA701-15-1M-S	Din 35 Rail 15 deep slopped 1 meter	50
	CA701-15-2M	Din 35 Rail 15 deep unslopped 2 meter	50
	CA701-15-2M-S	Din 35 Rail 15 deep slopped 2 meter	50

ACCESSORIES

IMAGES	CAT. NO.	DESCRIPTION	STD. PACK
	CA103	EndClamp in Polyamide suitable for Din 35/Din 35-15 rails	50
	CA702	End Clamp in Polyamide 66 suitable for Din 32 / Din 35 / Din 35-15 Rails	50
	CA802	End Clamp in Polyamide suitable for Din 35 / Din 35-15 Rails	50
	JX4/2	Shorting Link for 6 mm wide TB	100
	JX4/3	Shorting Link for 6 mm wide TB	50
	JX4/4	Shorting Link for 6 mm wide TB	50
	JX4/5	Shorting Link for 6 mm wide TB	50
	JX4/8	Shorting Link for 6 mm wide TB	10
	JX4/10	Shorting Link for 6 mm wide TB	10
	JX4/16	Shorting Link for 6 mm wide TB	10
	CA509/K6	Blank Marking Tag	100
	SCS0.6/3.5	Electricians Screwdriver for slotted screws	10
	CPF	Component fuse plug for component terminal block	50
	CFL6-60V	Fuse with 6-60V AC/DC LED Circuit	50
	CFL110-240V	Fuse with 110-240V AC/DC LED Circuit	50
	CPFL6-60V	Component fuse plug for component terminal block 6-60V	50
	CPFL110-240V	Component fuse plug for component terminal block 110-240V	50
	CC6D1	Component diode plug for component terminal block with 1N4007 Diode	50
	CC6D2	Component diode plug for component terminal block with 1N4007 Diode	50
	CIP	Isolation plug for component carrier terminal block	50
	MC6	MARKER CARD 6MM PITCH WITH 72 TAGS	10

CXCC4

**connectwell**
THE RIGHT CONNECTION

APPROVALS



NOTES

* Current rating are based on the component carriers. The Rated current is with the use of copper (Cu) conductor/Wire

RATINGS AS PER STANDARDS

STANDARDS	UL 1059	CSA C.22.2 No:158	IEC/EN60947-7-1
Approvals	UL	CSA	CE
Conductor Cross Section Stranded min.	24 AWG	24 AWG	0.2 mm ²
Conductor Cross Section Stranded max.	10 AWG	10 AWG	4 mm ²
Rated Voltage	600 V	600 V	1000 V
Rated Current	* A	* A	* A