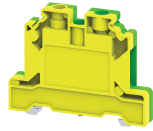


CGT6N



6 sq.mm Ground / Earth Terminal Blocks

These Terminal Blocks are used for Grounding / Earthing Wires. They are Green-Yellow colour coded as per industries standard. They have the same top profile as their respective feed through Terminal Blocks.

TECHNICAL DATA

Tightening Torque	0.8 Nm
Tightening Torque - Input Side	0.8 Nm
Tightening Torque - Output Side	0.8 Nm
Housing Material	Polymide
Standard Colour	Yellow - Green
Product Function	Earthing/Grounding
Wire Entry Orientation	Side Entry
Mounting Possibility	DIN 35/DIN 35-15 Rail
Screw Size	M3.5
Operated by	Screwdriver
Rated Surge Voltage	8 KV
Pollution Degree	3

CONNECTION DATA

Conductor Cross Section Stranded min.	0.2 mm ²
Conductor Cross Section Stranded max.	6 mm ²
Conductor Cross Section AWG/Kcmil min	22 AWG
Conductor Cross Section AWG/Kcmil max	8 AWG
Conductor Cross Section Stranded with Ferrule/Lug min	0.2 mm ²
Conductor Cross Section Stranded with Ferrule/Lug max	6 mm ²
2 Conductors with same Cross Section Stranded min	0.2 mm ²
2 Conductor with same Cross Section Stranded max	4 mm ²
2 Conductors with same Cross Section Stranded with TWIN Ferrule/Lug min	0.2 mm ²
2 Conductor with same Cross Section Stranded with TWIN Ferrule/Lug max	4 mm ²
Stripping Length	9 mm
Internal Cylindrical Guage	A5

DIMENSIONS

Height with DIN 35 x 15 mm rail	55.8 mm
Height with DIN 35 x 7.5 mm rail	48.2 mm
Length	54.5 mm
Width (Thickness)	8 mm

ORDERING INFORMATION

CAT. NO.	DESCRIPTION	STD. PACK
CGT6N	6 sq.mm Ground/Earth terminal block in Green-Yellow colour.	50

ACCESSORIES

IMAGES	CAT. NO.	DESCRIPTION	STD. PACK
	CA701-1M	Din 35 Rail unslotted 1 meter	50
	CA701-2M	Din 35 Rail unslotted 2 meter	50
	CA701-2M-S	Din 35 Rail slotted 2 meter	50
	CA701-1M-S	Din 35 Rail slotted 1 meter	50
	CA701-15-1M	Din 35 Rail 15 deep unslotted 1 meter	50
	CA701-15-1M-S	Din 35 Rail 15 deep slotted 1 meter	50
	CA701-15-2M	Din 35 Rail 15 deep unslotted 2 meter	50
	CA701-15-2M-S	Din 35 Rail 15 deep slotted 2 meter	50
	CA509/K8	Marking Tag with Vertical printing.	100
	SCS0.8/4	Electricians Screwdriver for slotted screws	10
	MC8	MARKER CARD 8MM PITCH WITH 48 TAGS	10

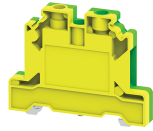
APPROVALS



NOTES

The Rated current is with the use of copper (Cu) conductor/Wire

CGT6N



connectwell
THE RIGHT CONNECTION

RATINGS AS PER STANDARDS

STANDARDS	UL 1059	CSA C.22.2 No:158	DIN EN60947-7-2
Approvals	UL	CSA	VDE
Conductor Cross Section Stranded min.	22 AWG	22 AWG	1.5 mm ²
Conductor Cross Section Stranded max.	8 AWG	8 AWG	6 mm ²
Tightening Torque	14 lb-in	14 lb-in	0.8 Nm
STANDARDS	IEC/EN60947-7-2	EN60079-7	EN60079-7
Approvals	CE	ATEX	ATEX-IECex
Conductor Cross Section Stranded min.	0.2 mm ²	0.5 mm ²	0.5 mm ²
Conductor Cross Section Stranded max.	6 mm ²	6 mm ²	6 mm ²
Tightening Torque	0.8 Nm	0.8 Nm	0.8 Nm
Operating Temperature Range		-40 to +85 °C	