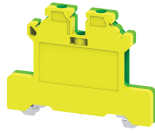


CGT4N


**connectwell**  
 THE RIGHT CONNECTION

#### 4 sq.mm Ground / Earth Terminal Blocks

These Terminal Blocks are used for Grounding / Earthing Wires. They are Green-Yellow colour coded as per industries standard. They have the same top profile as their respective feed through Terminal Blocks.

#### TECHNICAL DATA

|                        |                       |
|------------------------|-----------------------|
| Tightening Torque      | 0.4 Nm                |
| Housing Material       | Polymide              |
| Product Function       | Earthing/Grounding    |
| Wire Entry Orientation | Side Entry            |
| Mounting Possibility   | DIN 35/DIN 35-15 Rail |
| Screw Size             | M3                    |
| Operated by            | Screwdriver           |
| Rated Surge Voltage    | 8 KV                  |
| Pollution Degree       | 3                     |

#### CONNECTION DATA

|   |                     |
|---|---------------------|
| Conductor Cross Section Stranded min.                                   | 0.2 mm <sup>2</sup> |
| Conductor Cross Section Stranded max.                                   | 4 mm <sup>2</sup>   |
| Conductor Cross Section AWG/Kcmil min                                   | 22 AWG              |
| Conductor Cross Section AWG/Kcmil max                                   | 10 AWG              |
| Conductor Cross Section Stranded with Ferrule/Lug min                   | 0.2 mm <sup>2</sup> |
| Conductor Cross Section Stranded with Ferrule/Lug max                   | 4 mm <sup>2</sup>   |
| 2 Conductors with same Cross Section Stranded min                       | 0.2 mm <sup>2</sup> |
| 2 Conductor with same Cross Section Stranded max                        | 2.5 mm <sup>2</sup> |
| Conductor Cross Section Solid min                                       | 0.2 mm <sup>2</sup> |
| Conductor Cross Section Solid max                                       | 6 mm <sup>2</sup>   |
| 2 Conductors with same Cross Section Stranded with TWIN Ferrule/Lug min | 0.2 mm <sup>2</sup> |
| 2 Conductor with same Cross Section Stranded with TWIN Ferrule/Lug max  | 2.5 mm <sup>2</sup> |
| Stripping Length  | 8 mm                |
| Internal Cylindrical Guage  | A4                  |

#### DIMENSIONS

|                                  |         |
|----------------------------------|---------|
| Height with DIN 35 x 15 mm rail  | 54.4 mm |
| Height with DIN 35 x 7.5 mm rail | 47 mm   |
| Length                           | 54.2 mm |
| Width (Thickness)                | 6 mm    |

#### ORDERING INFORMATION

| CAT. NO. | DESCRIPTION                                  | STD. PACK |
|----------|--|-----------|
| CGT4N    | 4 sq.mm Grounding / Earthing Terminal Block. | 50        |

#### ACCESSORIES

| IMAGES | CAT. NO.      | DESCRIPTION                                 | STD. PACK |
|--------|---------------|---|-----------|
|        | CA701-1M      | Din 35 Rail unslotted 1 meter               | 50        |
|        | CA701-2M      | Din 35 Rail unslotted 2 meter               | 50        |
|        | CA701-2M-S    | Din 35 Rail slotted 2 meter                 | 50        |
|        | CA701-1M-S    | Din 35 Rail slotted 1 meter                 | 50        |
|        | CA701-15-1M   | Din 35 Rail 15 deep unslotted 1 meter       | 50        |
|        | CA701-15-1M-S | Din 35 Rail 15 deep slotted 1 meter         | 50        |
|        | CA701-15-2M   | Din 35 Rail 15 deep unslotted 2 meter       | 50        |
|        | CA701-15-2M-S | Din 35 Rail 15 deep slotted 2 meter         | 50        |
|        | CA509/K6      | Blank Marking Tag                           | 100       |
|        | SCS0.6/3.5    | Electricians Screwdriver for slotted screws | 10        |
|        | MC6           | MARKER CARD 6MM PITCH WITH 72 TAGS          | 10        |

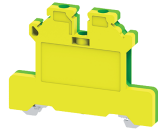
#### APPROVALS



#### NOTES

The Rated current is with the use of copper (Cu) conductor/Wire

CGT4N



**connectwell**  
THE RIGHT CONNECTION

**RATINGS AS PER STANDARDS**

| <b>STANDARDS</b>                      | <b>UL 1059</b>         | <b>CSA C.22.2 No:158</b> | <b>DIN EN60947-7-2</b> |
|---------------------------------------|------------------------|--------------------------|------------------------|
| Approvals                             | UL                     | CSA                      | VDE                    |
| Conductor Cross Section Stranded min. | 22 AWG                 | 22 AWG                   | 0.5 mm <sup>2</sup>    |
| Conductor Cross Section Stranded max. | 10 AWG                 | 10 AWG                   | 4 mm <sup>2</sup>      |
| Tightening Torque                     | 7 lb-in                | 7 lb-in                  | 0.4 Nm                 |
| <b>STANDARDS</b>                      | <b>IEC/EN60947-7-2</b> | <b>EN60079-7</b>         | <b>EN60079-7</b>       |
| Approvals                             | CE                     | ATEX                     | ATEX-IECex             |
| Conductor Cross Section Stranded min. | 0.2 mm <sup>2</sup>    | 0.5 mm <sup>2</sup>      | 0.5 mm <sup>2</sup>    |
| Conductor Cross Section Stranded max. | 4 mm <sup>2</sup>      | 4 mm <sup>2</sup>        | 4 mm <sup>2</sup>      |
| Tightening Torque                     | 0.4 Nm                 | 0.4 Nm                   | 0.4 Nm                 |