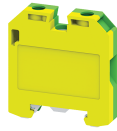


CGMT4



Micro - 4 sq.mm Ground/Earth Terminal Blocks.

These blocks are used for terminating Grounding/Earthing wires. They are green-yellow coded as per industry standards. CGMT4 is suitable for DIN 15 micro rail & can be used in conjunction with CMT4 Terminal Blocks.

TECHNICAL DATA

| | |
|------------------------|--------------------|
| Tightening Torque | 0.5 Nm |
| Housing Material | Polymide |
| Product Function | Earthing/Grounding |
| Wire Entry Orientation | Side Entry |
| Mounting Possibility | DIN 15 Rail |
| Screw Size | M3 |
| Operated by | Screwdriver |
| Rated Surge Voltage | 4 KV |
| Pollution Degree | 3 |

CONNECTION DATA

| | |
|---|---------------------|
| Conductor Cross Section Stranded min. | 0.2 mm ² |
| Conductor Cross Section Stranded max. | 4 mm ² |
| Conductor Cross Section AWG/Kcmil min | 22 mm ² |
| Conductor Cross Section AWG/Kcmil max | 10 mm ² |
| Conductor Cross Section Stranded with Ferrule/Lug min | 0.2 mm ² |
| Conductor Cross Section Stranded with Ferrule/Lug max | 4 mm ² |
| 2 Conductors with same Cross Section Stranded min | 0.2 mm ² |
| 2 Conductor with same Cross Section Stranded max | 2.5 mm ² |
| Conductor Cross Section Solid min | 0.2 mm ² |
| Conductor Cross Section Solid max | 6 mm ² |
| 2 Conductors with same Cross Section Stranded with TWIN Ferrule/Lug min | 0.2 mm ² |
| 2 Conductor with same Cross Section Stranded with TWIN Ferrule/Lug max | 2.5 mm ² |
| Stripping Length | 8 mm |
| Internal Cylindrical Gauge | A4 |

DIMENSIONS

| | |
|---------------------------------|---------|
| Height with DIN 15 x 5 mm rail | 30.7 mm |
| Height with DIN 35 x 15 mm rail | mm |
| Length | 27 mm |
| Width (Thickness) | 6 mm |

ORDERING INFORMATION

| CAT. NO. | DESCRIPTION | STD. PACK |
|----------|--|-----------|
| CGMT4 | 4 sqmm Ground/Earth terminal block in Green-Yellow colour. | 100 |

ACCESSORIES

| IMAGES | CAT. NO. | DESCRIPTION | STD. PACK |
|--------|------------|---|-----------|
| | CA601 | Din 15 Rail unslotted | 100 |
| | CA601-1M | DIN 15 RAIL 1 METER SLOTTED | 50 |
| | CA509/K2 | Marking Tag Blank suitable for CDL4U / CDL4U(I.S) / CTL2.5U / CTL2.5UH / CTL2.5UL / CTL2.5HUL / CTL2.5U(I.S) / CTL2.5U(I.S)D2 / CGMT4 / CSFL4U / CSFL4U(L) / CMT4 / CMB4 / ASF4 / ASF4(L) / CTS2.5(| 100 |
| | SCS0.6/3.5 | Electricians Screwdriver for slotted screws | 10 |
| | MC2 | MARKER CARD 6MM PITCH WITH 72 TAGS | 10 |

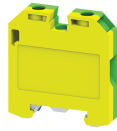
APPROVALS



NOTES

The Rated current is with the use of copper (Cu) conductor/Wire

CGMT4



connectwell
THE RIGHT CONNECTION

RATINGS AS PER STANDARDS

| STANDARDS | UL 1059 | CSA C.22.2 No:158 | DIN EN60947-7-2 |
|---------------------------------------|------------------------|--------------------------|------------------------|
| Approvals | UL | CSA | VDE |
| Conductor Cross Section Stranded min. | 22 AWG | 22 AWG | 0.5 mm ² |
| Conductor Cross Section Stranded max. | 10 AWG | 10 AWG | 4 mm ² |
| Tightening Torque | 7 lb-in | 7 lb-in | 0.5 Nm |
| STANDARDS | IEC/EN60947-7-2 | EN60079-7 | EN60079-7 |
| Approvals | CE | ATEX | ATEX-IECex |
| Conductor Cross Section Stranded min. | 0.2 mm ² | 0.5 mm ² | 0.5 mm ² |
| Conductor Cross Section Stranded max. | 4 mm ² | 4 mm ² | 4 mm ² |
| Tightening Torque | 0.5 Nm | 0.5 Nm | 0.5 Nm |
| Operating Temperature Range | | -40 to +85 °C | |