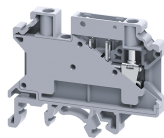


CCC4U



connectwell
THE RIGHT CONNECTION

Component carrier terminal block

These blocks are used for measuring, control, regulatory circuits and for current transformer connection application. These blocks are component carrier base. Various pluggable component carriers can be installed easily. These component carriers have built in protection against incorrect polarity.

CPD1 & CPF component plugs are suitable for these terminal block.

TECHNICAL DATA

Rated Voltage	1000 V
Rated Current	10 A
Tightening Torque	0.5 Nm
Housing Material	Polymide
Wire Entry Orientation	Side
Mounting Possibility	DIN 32/DIN 35/DIN 35-15 Rail
Operated by	Screw Driver
Rated Surge Voltage	8 KV
Pollution Degree	3

CONNECTION DATA

Conductor Cross Section Stranded min.	0.2 mm ²
Conductor Cross Section Stranded max.	4 mm ²
Conductor Cross Section AWG/Kcmil min	24 AWG
Conductor Cross Section AWG/Kcmil max	10 AWG
Conductor Cross Section Stranded with Ferrule/Lug min	0.2 mm ²
Conductor Cross Section Stranded with Ferrule/Lug max	4 mm ²
2 Conductors with same Cross Section Stranded min	0.2 mm ²
2 Conductor with same Cross Section Stranded max	2.5 mm ²
Conductor Cross Section Solid min	0.2 mm ²
Conductor Cross Section Solid max	6 mm ²
2 Conductors with same Cross Section Stranded with TWIN Ferrule/Lug min	0.2 mm ²
2 Conductor with same Cross Section Stranded with TWIN Ferrule/Lug max	2.5 mm ²
Stripping Length	8 mm
Internal Cylindrical Guage	A4

DIMENSIONS

Height with DIN 32 rail	51.5 mm
Height with DIN 35 x 15 mm rail	53.5 mm
Height with DIN 35 x 7.5 mm rail	46 mm
Length	58.5 mm
Width (Thickness)	6 mm

ORDERING INFORMATION

CAT. NO.	DESCRIPTION	STD. PACK
CCC4U	4 sq. mm Component Carrier Terminal Block in	50

ORDERING INFORMATION

CAT. NO.	DESCRIPTION	STD. PACK
	Grey colour	

ACCESSORIES

IMAGES	CAT. NO.	DESCRIPTION	STD. PACK
	CA501-1M	Din 32 Rail unslotted 1 meter	50
	CA501-1M-S	Din 32 Rail slotted 1 meter	50
	CA501-2M	Din 32 Rail unslotted 2 meter	50
	CA501-2M-S	Din 32 Rail slotted 2 meter	50

	CA701-1M	Din 35 Rail unslotted 1 meter	50
	CA701-2M	Din 35 Rail unslotted 2 meter	50
	CA701-2M-S	Din 35 Rail slotted 2 meter	50
	CA701-1M-S	Din 35 Rail slotted 1 meter	50

	CA701-15-1M	Din 35 Rail 15 deep unslotted 1 meter	50
	CA701-15-1M-S	Din 35 Rail 15 deep slotted 1 meter	50
	CA701-15-2M	Din 35 Rail 15 deep unslotted 2 meter	50
	CA701-15-2M-S	Din 35 Rail 15 deep slotted 2 meter	50

	CA202	End Clamp in Polyamide suitable for Din 35 / Din 35-15 Rails	25
--	-------	--	----

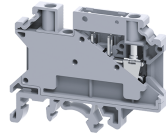
	CA702	End Clamp in Polyamide 66 suitable for Din 32 / Din 35 / Din 35-15 Rails	50
--	-------	--	----

	CA802	End Clamp in Polyamide suitable for Din 35 / Din 35-15 Rails	50
--	-------	--	----

	CA722/2	Pre Assembled Shorting Link assemblies with 2 poles	100
	CA722/3	Pre Assembled Shorting Links assemblies with 3 poles	100
	CA722/4	Pre Assembled Shorting Links assemblies with 4 poles	100
	CA722/5	Pre Assembled Shorting Links assemblies with 5 poles	100
	CA722/10	Pre Assembled Shorting Links assemblies with 10 poles	10
	CA722/100	Pre Assembled Shorting Links assemblies with 100 poles	10







	CA509/K6	Blank Marking Tag	100
--	----------	-------------------	-----

CCC4U



connectwell
THE RIGHT CONNECTION

ACCESSORIES

IMAGES	CAT. NO.	DESCRIPTION	STD. PACK
	SCS0.6/3.5	Electricians Screwdriver for slotted screws	10
	CPF	Component fuse plug for component terminal block	50
	CFL6-60V	Fuse with 6-60V AC/DC LED Circuit	50
	CFL110-240V	Fuse with 110-240V AC/DC LED Circuit	50
	CPFL6-60V	Component fuse plug for component terminal block 6-60V	50
	CPFL110-240V	Component fuse plug for component terminal block 110-240V	50
	CC6D1	Component diode plug for component terminal block with 1N4007 Diode	50
	CC6D2	Component diode plug for component terminal block with 1N4007 Diode	50
	CIP	Isolation plug for component carrier terminal block	50
	MC6	MARKER CARD 6MM PITCH WITH 72 TAGS	10

APPROVALS



NOTES

- 1)The Rated current is with the use of copper (Cu) conductor/Wire.
- 2)Current rating are based on the component carriers.

RATINGS AS PER STANDARDS

STANDARDS	UL 1059	IEC/EN60947-7-1
Approvals	UL	CE
Conductor Cross Section Stranded min.	24 AWG	0.2 mm ²
Conductor Cross Section Stranded max.	10 AWG	4 mm ²
Rated Voltage	600 V	1000 V
Tightening Torque	4.5 lb-in	0.5 Nm