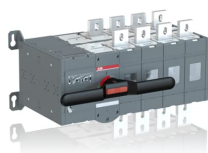


PRODUCT-DETAILS

OTM1250E4CM230C

OTM1250E4CM230C MOTORIZED C/O SWITCH



General Information

Extended Product Type	OTM1250E4CM230C
Product ID	1SCA112702R1001
EAN	6417019453941
Catalog Description	OTM1250E4CM230C MOTORIZED C/O SWITCH
Long Description	Including a handle for manual operation, bolt kit with nut and washers for all terminals and male connectors for control circuits. Include a storage clip for the handle and spare fuses.

Popular Downloads

Data Sheet, Technical Information	1SCC303003C0201
Instructions and Manuals	1SCC303002M0204

Dimensions

Product Net Width	587 mm
Product Net Height	306 mm
Product Net Depth / Length	297 mm
Product Net Weight	65 kg

Technical

Rated Operational Current AC-21A (I _e)	(380 ... 415 V) 1250 A (500 V) 1250 A (690 V) 1250 A
Rated Operational Current AC-22A (I _e)	(380 ... 415 V) 1250 A (500 V) 1250 A (690 V) 1250 A
Rated Operational Current AC-23A (I _e)	(380 ... 415 V) 1250 A (500 V) 1250 A (690 V) 1250 A
Rated Operational Current AC-31B (I _e)	(380 ... 415 V) 1250 A
Rated Operational Current AC-33B (I _e)	(380 ... 415 V) 1000 A
Rated Operational Power AC-23A (P _e)	(380 ... 415 V) 710 kW (500 V) 900 kW (690 V) 1200 kW
Conventional Free-air Thermal Current (I _{th})	q = 40 °C 1250 A
Rated Impulse Withstand Voltage (U _{imp})	12 kV
Rated Insulation Voltage (U _i)	1000 V
Rated Operational Voltage	1000 V
Rated Short-time Withstand Current (I _{cw})	for 1 s 50 kiloampere rms
Motor Operational Voltage	220 ... 240 V AC
Power Loss	29 W
Pollution Degree	3
Handle Color	Black
Handle Type	Direct mounted handle
Fourth Pole Position	Right Side
Fourth Pole Type	Switched - Simultaneous Function
Switches Operating Mechanism	Mechanism at the End of the Switch
Distance Between Phases	Standard
Position of Line Terminals	Top In - Bottom Out, Bottom In - Top Out
Operating Mode	Front operated
Mounting Type	Base mounting
Number of Poles	4
Degree of Protection	Front IP20

Environmental

Environmental Information	1SCC303036D0202
---------------------------	-----------------

Certificates and Declarations (Document Number)

Declaration of Conformity - CE	1SCC303027D0201
Environmental Information	1SCC303036D0202
Instructions and Manuals	1SCC303002M0204
RoHS Information	1SCC303036D0202

Container Information

Package Level 1 Units	1 piece
Package Level 1 Width	490 mm
Package Level 1 Depth / Length	590 mm
Package Level 1 Height	430 mm
Package Level 1 Gross Weight	65 kg
Package Level 1 EAN	6417019453941

Classifications

Object Classification Code	Q
ETIM 5	EC000216 - Switch disconnecter
ETIM 6	EC000216 - Switch disconnecter
ETIM 7	EC000216 - Switch disconnecter
WEEE Category	4. Large Equipment (Any External Dimension More Than 50 cm)

Categories

Low Voltage Products and Systems → Switches → Change-over and Transfer Switches → Motorized Change-over Switches

