

Push button box

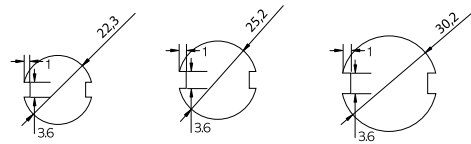
푸시버튼박스 / 按钮盒

• Feature / 특성 / 特征

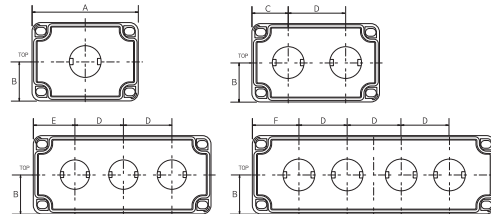
- Screw type. insert
- 스크류 타입, 인서트 있는 제품
- 螺栓型, 有螺母的产品



PUSH BUTTON HOLE



COVER



Cat. No.	Division	Hole	A	B	C	D	E	F
BC-□GS-08110□-□□01	1-Hole	55	40	-	-	-	-	-
BC-□GS-08130□-□□02	2-Hole	-	40	40	50	-	-	-
BC-□GS-08180□-□□03	3-Hole	-	40	-	50	40	-	-
BC-□GS-08250□-□□04	4-Hole	-	40	-	50	-	-	50

Product model / 제품모델 / 产品型号						
Model / 모델 / 型号	φ	Hole	Size (W×L×H/mm) / 사이즈 / 尺寸	Size (W×L×H/inch) / 사이즈 / 尺寸	Inside depth(mm) / 내부깊이 / 内部深度	
BC-□GS-081107-2201	22 φ	1 HOLE	80×110×70	3.15×4.33×2.76	57	
BC-□GS-081108-2201			80×110×85	3.15×4.33×3.35	72	
BC-□GS-081307-2202		2 HOLE	80×130×70	3.15×5.12×2.76	57	
BC-□GS-081308-2202			80×130×85	3.15×5.12×3.35	72	
BC-□GS-081807-2203		3 HOLE	80×180×70	3.15×7.09×2.76	57	
BC-□GS-081808-2203			80×180×85	3.15×7.09×3.35	72	
BC-□GS-082507-2204		4 HOLE	80×250×70	3.15×9.84×2.76	57	
BC-□GS-082508-2204			80×250×85	3.15×9.84×3.35	72	
BC-□GS-081107-2501	25 φ	1 HOLE	80×110×70	3.15×4.33×2.76	57	
BC-□GS-081108-2501			80×110×85	3.15×4.33×3.35	72	
BC-□GS-081307-2502		2 HOLE	80×130×70	3.15×5.12×2.76	57	
BC-□GS-081308-2502			80×130×85	3.15×5.12×3.35	72	
BC-□GS-081807-2503		3 HOLE	80×180×70	3.15×7.09×2.76	57	
BC-□GS-081808-2503			80×180×85	3.15×7.09×3.35	72	
BC-□GS-082507-2504		4 HOLE	80×250×70	3.15×9.84×2.76	57	
BC-□GS-082508-2504			80×250×85	3.15×9.84×3.35	72	
BC-□GS-081107-3001	30 φ	1 HOLE	80×110×70	3.15×4.33×2.76	57	
BC-□GS-081108-3001			80×110×85	3.15×4.33×3.35	72	
BC-□GS-081307-3002		2 HOLE	80×130×70	3.15×5.12×2.76	57	
BC-□GS-081308-3002			80×130×85	3.15×5.12×3.35	72	
BC-□GS-081807-3003		3 HOLE	80×180×70	3.15×7.09×2.76	57	
BC-□GS-081808-3003			80×180×85	3.15×7.09×3.35	72	
BC-□GS-082507-3004		4 HOLE	80×250×70	3.15×9.84×2.76	57	
BC-□GS-082508-3004			80×250×85	3.15×9.84×3.35	72	

• Specification / 사양 / 产品规格说明

Temperature range / 온도영역 / 温度范围

ABS : - 40 ~ + 70, PC : - 40 ~ + 110

Flammability Rating / 난연성 / 难燃性

ABS : 94-HB, PC : 94-V-0, 5VA, HB

• Push button box model name / 푸시버튼박스 모델선정방법 / 按钮盒产品型号命名方法

