

S series

S 시리즈 / S系列

• Feature / 특성 / 特征

- 1. Screw type. insert
- 1. 스크류 타입 인서트 있는 제품
- 1. 螺栓型. 有螺母的产品

• Specification / 사양 / 产品规格说明

Temperature range / 온도영역 / 温度范围

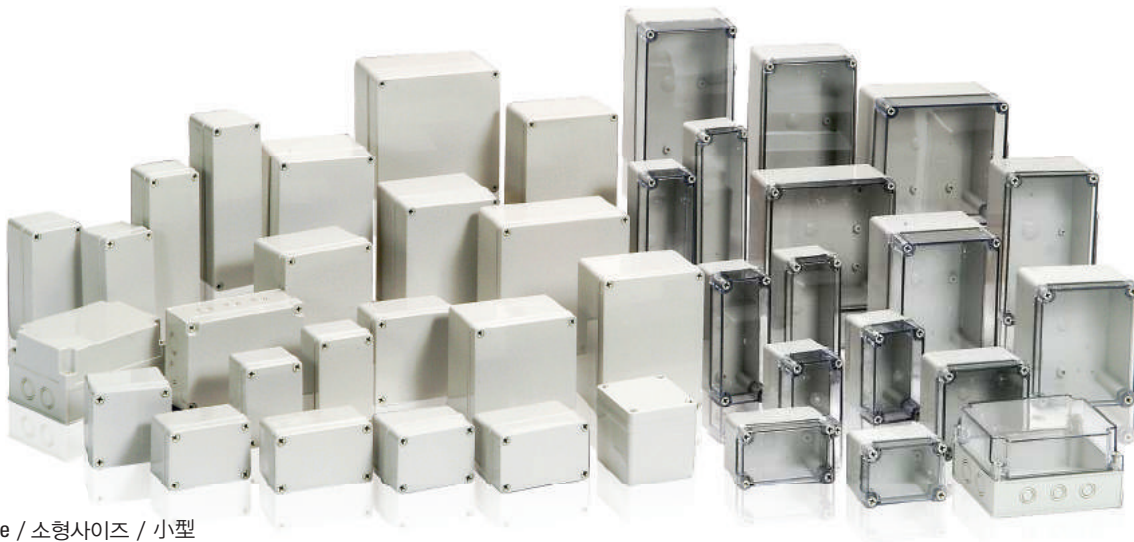
ABS : - 40 ~ + 70, PC : - 40 ~ + 110

Flammability Rating / 난연성 / 难燃性

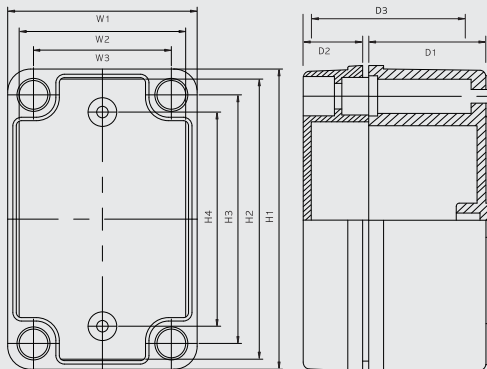
ABS : 94-HB, PC : 94-V-0, 5VA, 94-HB



Medium size / 중형사이즈 / 中型



Small size / 소형사이즈 / 小型



• S Series model name / S시리즈 모델선정방법 / S系列产品型号命名方法



S Series - Medium size

S 시리즈 - 중형사이즈

S 系列 - 中型

(190x190x130~380x560x180mm)



Product model / 제품모델 / 产品型号				Mounting plate / 속판모델 / 底板型号			
Model 모델 / 型号	Size (W×L×H/mm) 사이즈 / 尺寸	Size(W×L×H/inch) 사이즈 / 尺寸	Inside depth(mm) 내부깊이 / 内部深度	Steel 철 / 金属	Plastic 플라스틱 / 塑料	Size(mm) 사이즈 / 尺寸	Size(inch) 사이즈 / 尺寸
BC-□□S-191913	190×190×130	7.48×7.48×5.12	115	1919S	1919P	159×159	6.26×6.26
NEW BC-□□S-192810	190×280×100	7.48×11.02×3.94	84	1928S	1928P	159×248	6.26×9.76
BC-□□S-192813	190×280×130	7.48×11.02×5.12	115	1928S	1928P	159×248	6.26×9.76
BC-□□S-192818	190×280×180	7.48×11.02×7.09	165	1928S	1928P	159×248	6.26×9.76
BC-□□S-193813	190×380×130	7.48×14.96×5.12	112	1938S	1938P	159×348	6.26×13.70
BC-□□S-193818	190×380×180	7.48×14.96×7.09	165	1938S	1938P	159×348	6.26×13.70
BC-□□S-282813	280×280×130	11.02×11.02×5.12	112	2828S	2828P	248×248	9.76×9.76
BC-□□S-283413	280×340×130	11.02×13.39×5.12	112	2834S	2834P	248×308	9.76×12.12
BC-□□S-283813	280×380×130	11.02×14.96×5.12	112	2838S	2838P	248×348	9.76×13.70
BC-□□S-283818	280×380×180	11.02×14.96×7.09	161.6	2838S	2838P	248×348	9.76×13.70
BC-□□S-285613	280×560×130	11.02×22.05×5.12	112	2856S	-	(232)×(535)	(9.13)×(21.06)
BC-□□S-334318	330×430×180	12.99×16.93×7.09	160.8	3343S	3343P	(295)×(395)	(11.61)×(15.55)
BC-□□S-385618	380×560×180	14.96×22.05×7.09	160.8	3856S	-	(345)×(535)	(13.58)×(21.06)

▶ Accessories / 액세서리 / 配件

Steel mounting plate	Plastic mounting plate	Vent(V60, V80)	SUS bracket(B50)	Plastic bracket(PB50)
Cover screw(standard, CB28-)	Cover screw(standard) 커버 스크류(기본) 紧固螺栓 (标准提供)		Cover screw(optional, CB28+)	Cover screw(optional) 커버 스크류(선택) 紧固螺栓 (指定提供)

S Series - Small size

S 시리즈 - 소형사이즈

S 系列 - 小型








(50x65x45~210x230x100mm)



Product model / 제품모델 / 产品型号				Mounting plate / 속판모델 / 底板型号			
Model 모델 / 型号	Size (W×L×H/mm) 사이즈 / 尺寸	Size(W×L×H/inch) 사이즈 / 尺寸	Inside depth(mm) 내부깊이 / 内部深度	Steel 철 / 金属	Plastic 플라스틱 / 塑料	Size(mm) 사이즈 / 尺寸	Size(inch) 사이즈 / 尺寸
BC-□□S-050604	50×65×45	1.97×2.56×1.77	33	0506S	-	(52)×(38)	(2.05)×(1.50)
BC-□□S-050605	50×65×55	1.97×2.56×2.17	43	0506S	-	(52)×(38)	(2.05)×(1.50)
BC-□□S-060905	65×95×55	2.56×3.74×2.17	41.6	0609S	-	(50)×(80)	(1.97)×(3.15)
BC-□□S-071005	75×105×55	2.95×4.13×2.17	41.6	0710S	-	(60)×(90)	(2.36)×(3.54)
BC-□□S-080806	80×80×60	3.15×3.15×2.36	46.6	0808S	-	(65)×(65)	(2.56)×(2.56)
BC-□□S-081104	80×110×45	3.15×4.33×1.77	31.6	0811S	0811P	65×95	2.56×3.74
BC-□□S-081107	80×110×70	3.15×4.33×2.76	57	0811S	0811P	65×95	2.56×3.74
BC-□□S-081108	80×110×85	3.15×4.33×3.35	72	0811S	0811P	65×95	2.56×3.74
BC-□□S-081110	80×110×100	3.15×4.33×3.94	87	0811S	0811P	65×95	2.56×3.74
BC-□□S-081307	80×130×70	3.15×5.12×2.76	57	0813S	0813P	65×115	2.56×4.53
BC-□□S-081308	80×130×85	3.15×5.12×3.35	72	0813S	0813P	65×115	2.56×4.53
BC-□□S-081605	80×160×55	3.15×6.30×2.17	41.6	0816S	0816P	65×152	2.56×5.98
BC-□□S-081608	80×160×85	3.15×6.30×3.35	71.6	0816S	0816P	65×152	2.56×5.98
BC-□□S-081807	80×180×70	3.15×7.09×2.76	57	0818S	0818P	65×165	2.56×6.50
BC-□□S-081808	80×180×85	3.15×7.09×3.35	72	0818S	0818P	65×165	2.56×6.50
BC-□□S-082507	80×250×70	3.15×9.84×2.76	57	0825S	0825P	65×235	2.56×9.25
BC-□□S-082508	80×250×85	3.15×9.84×3.35	72	0825S	0825P	65×235	2.56×9.25
BC-□□S-101007	100×100×75	3.94×3.94×2.95	61.6	1010S	1010P	88×89	3.46×3.50
BC-□□S-101010	100×100×100	3.94×3.94×3.94	86.6	1010S	1010P	88×89	3.46×3.50
BC-□□S-101807	100×185×70	3.94×7.28×2.76	56.6	1018S	-	(88)×(174)	(3.46)×(6.85)
BC-□□S-102007	100×200×70	3.94×7.87×2.76	56.6	1020S	1020P	(88)×(189)	(3.46)×(7.44)
BC-□□S-102307	100×230×70	3.94×9.06×2.76	56.6	1023S	-	(88)×(219)	(3.46)×(8.62)
BC-□□S-121207	125×125×75	4.92×4.92×2.95	60.5	1212S	1212P	101×102	3.98×4.02
BC-□□S-121210	125×125×100	4.92×4.92×3.94	85.8	1212S	1212P	101×102	3.98×4.02
BC-□□S-121707	125×175×75	4.92×6.89×2.95	60.5	1217S	1217P	101×156	3.98×6.14
BC-□□S-121710	125×175×100	4.92×6.89×3.94	85.8	1217S	1217P	101×156	3.98×6.14
BC-□□S-141709	140×170×95	5.51×6.69×3.74	81.6	1417S	1417P	122×154	4.80×6.06
BC-□□S-142309	140×230×95	5.51×9.06×3.74	81.6	1423S	1423P	122×211	4.80×8.31
BC-□□S-151507	150×150×75	5.91×5.91×2.95	61.6	1515S	1515P	134×134	5.28×5.28
BC-□□S-151510	150×150×100	5.91×5.91×3.94	86.6	1515S	1515P	134×134	5.28×5.28
BC-□□S-152004	150×200×45	5.91×7.87×1.77	31.6	1520S	1520P	136×186	5.35×7.32
BC-□□S-152007	150×200×75	5.91×7.87×2.95	61.6	1520S	1520P	136×186	5.35×7.32
BC-□□S-152010	150×200×100	5.91×7.87×3.94	86.6	1520S	1520P	136×186	5.35×7.32
BC-□□S-152013	150×200×130	5.91×7.87×5.12	117.6	1520S	1520P	136×186	5.35×7.32
BC-□□S-152016	150×200×160	5.91×7.87×6.30	146.6	1520S	1520P	136×186	5.35×7.32
BC-□□S-152510	150×250×100	5.91×9.84×3.94	96.6	1525S	1525P	136×235	5.35×9.25
BC-□□S-152513	150×250×130	5.91×9.84×5.12	117.6	1525S	1525P	136×235	5.35×9.25

Product model / 제품모델 / 产品型号				Mounting plate / 속판모델 / 底板型号			
Model 모델 / 型号	Size (W×L×H/mm) 사이즈 / 尺寸	Size(W×L×H/inch) 사이즈 / 尺寸	Inside depth(mm) 내부깊이 / 内部深度	Steel 철 / 金属	Plastic 플라스틱 / 塑料	Size(mm) 사이즈 / 尺寸	Size(inch) 사이즈 / 尺寸
BC-□□S-161607	160×160×70	6.30×6.30×2.76	56.6	1616S	1616P	134×134	5.27×5.27
BC-□□S-202010	200×200×100	7.87×7.87×3.94	86	2020S	2020P	187×187	7.36×7.36
BC-□□S-202013	200×200×130	7.87×7.87×5.12	116	2020S	2020P	187×187	7.36×7.36
BC-□□S-202016	200×200×160	7.87×7.87×6.30	146	2020S	2020P	187×187	7.36×7.36
BC-□□S-202019	200×200×190	7.87×7.87×7.48	176	2020S	2020P	187×187	7.36×7.36
BC-□□S-212310	210×230×100	8.27×9.06×3.94	86	2123S	-	196.5×216	7.74×8.50

▶ **Accessories / 액세서리 / 配件**

Steel mounting plate 	Cover screw(standard, CB10) 	Cover screw(standard, CB20) 	Steel mounting plate 
Cover screw(standard, CB35) 	Cover screw(standard, CB50) 	SUS bracket(B40) 	Plastic bracket(PB40) 